

# TRADITION

## GREEK STYLE

### EXAMPLE IMAGES



### MAIN DISTINGUISHING CHARACTERISTICS

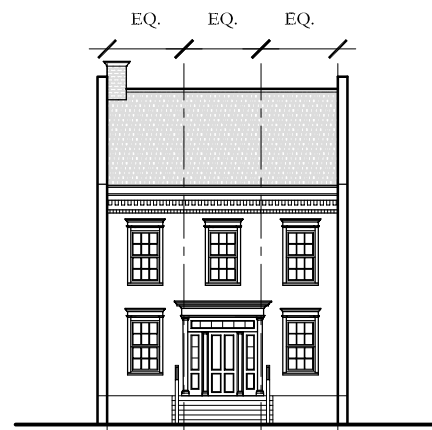
- Greek style houses commonly have either an entry porch, full height entry porch, or a full facade porch.
- Porch support columns are sized proportionally to the scale of the porch.
- The front door is typically surrounded by narrow rectangular windows and a transom above.
- The roof is either gabled or hipped with a low pitch of 4:12 to 6:12.
- The cornice line is accented with a wide band of trim.

# TRADITION

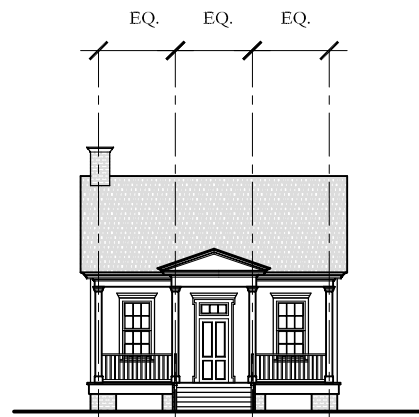
## GREEK TYPOLOGIES

### ELEVATIONS

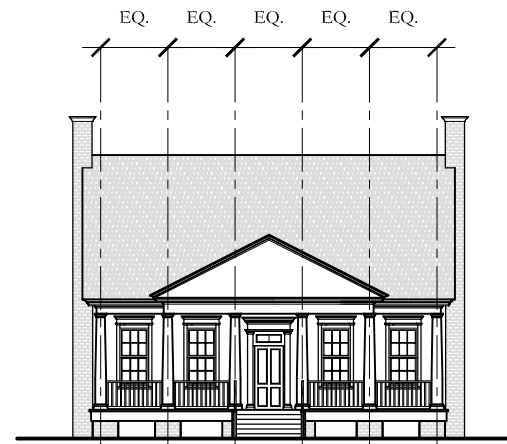
### BASIC MASSING



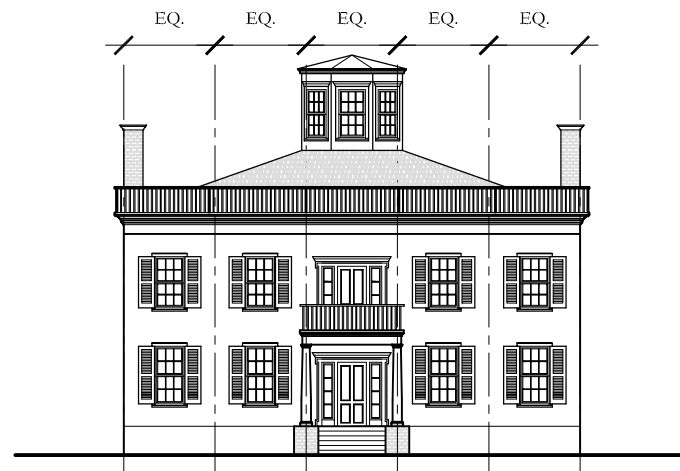
GREEK TOWNHOUSE



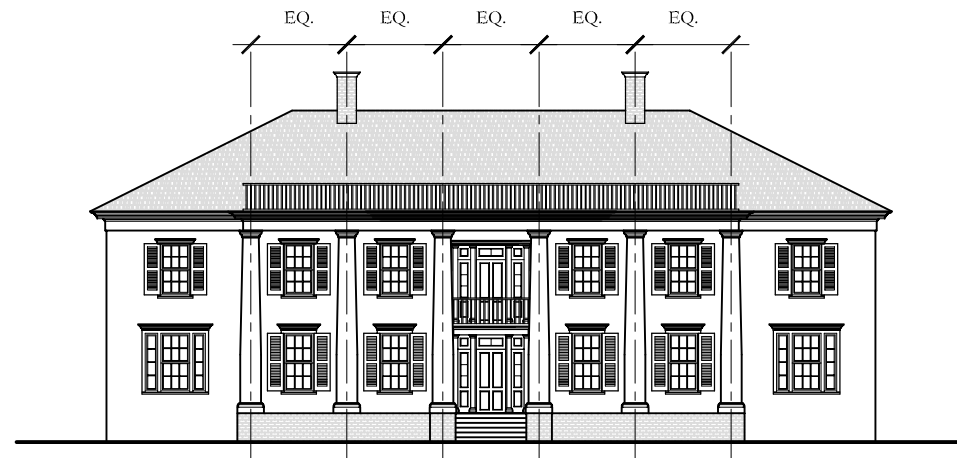
GREEK COTTAGE



GREEK HOUSE



GREEK HOUSE



GREEK HOUSE

- Less than full height entry porch:  
 Either side gable or hip roof  
 The entry porch may be recessed into the facade
- Full height Entry porch:  
 Either side gable or hip roof  
 Band of cornice trim and rectangular lights over the entrance  
 May have a traditional classical pediment above the entry porch  
 May have a flat roof on the entry porch  
 The entry porch may be recessed into the facade
- Full facade porch:  
 Either side gable or hip roof  
 No pediment  
 The porch is either covered by the main roof or by a flat or shed extension from the main roof  
 The porch may extend around one of both sides of the house
- Front gabled roof:  
 May have a full-width colonnaded porch beneath the front gable  
 May have a small entry porch
- Gabled front with wing:  
 Wings are lower than the dominant front gabled portion
- Townhouse:  
 With or without a porch

MANSION APARTMENTS OR CONDOS

THESE DIAGRAMS ILLUSTRATE A RANGE OF POSSIBILITIES FOR HOUSE DESIGNS USING THE TRADITION DESIGN CODE.