

T R A D I T I O N

G E O R G I A N S T Y L E

EXAMPLE IMAGES



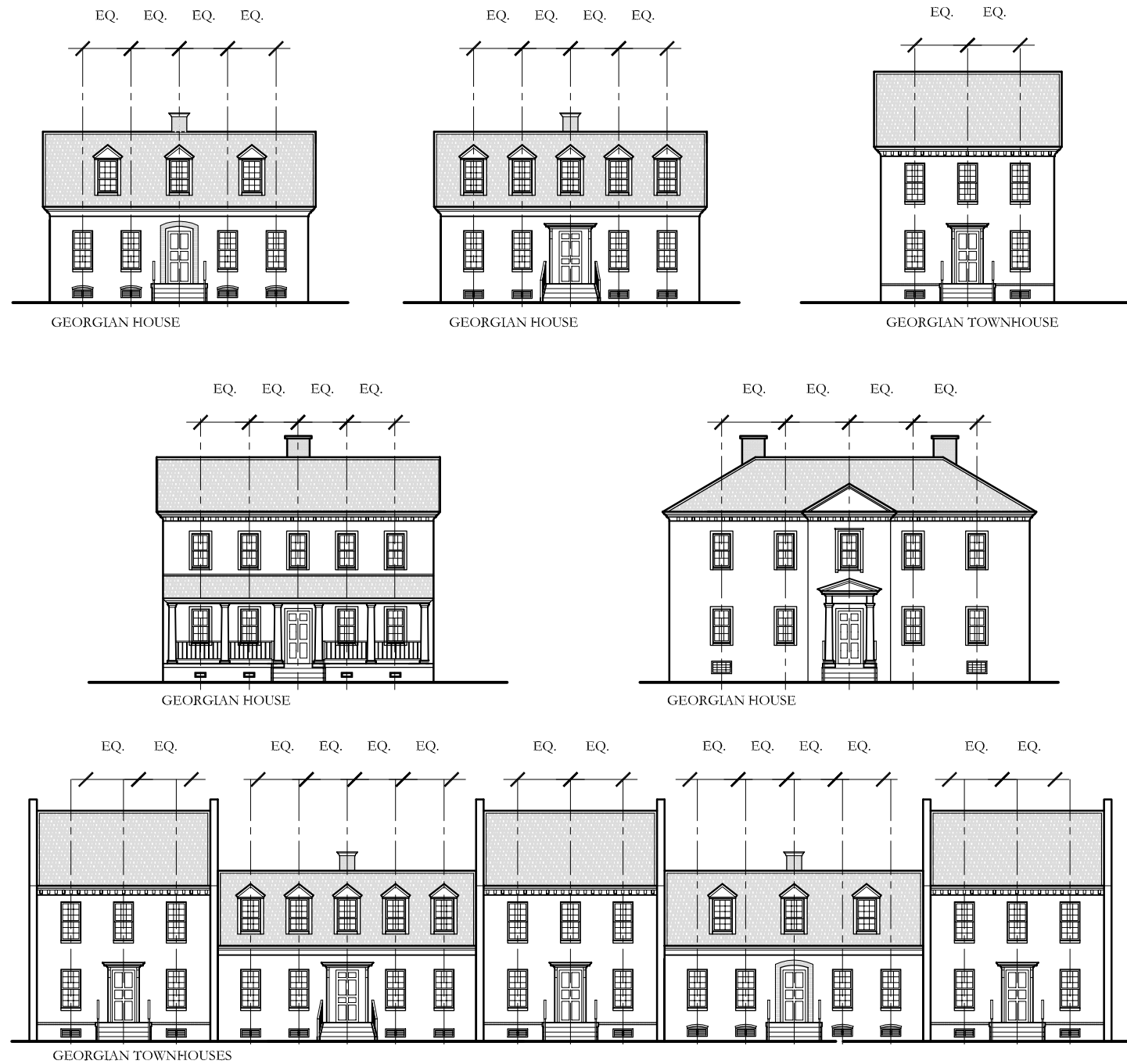
MAIN DISTINGUISHING CHARACTERISTICS

- Georgian style houses commonly have a paneled front door with a decorative crown.
- The cornice is emphasized by decorative molding.
- The windows are double-hung with many small panes and thick wooden muntins.
- Windows are aligned horizontally and vertically in symmetrical rows
- Georgian style houses are usually a simple one or two story box, two rooms deep, with doors and windows in strict symmetry.

TRADITION

GEORGIAN TYPOLOGIES

ELEVATIONS



BASIC MASSING

- Side-gabled roof
- Hipped roof
 - May be dual-pitched
- Centered gable
 - Has a gable (pediment) centered on the front facade that is either flush with the facade or extends slightly forward for emphasis as a pavilion
- Town House
 - Urban house with a narrow front facade and linear plans

THESE DIAGRAMS ILLUSTRATE A RANGE OF POSSIBILITIES FOR HOUSE DESIGNS USING THE TRADITION DESIGN CODE.