

TRADITION

COLONIAL (FARMHOUSE) STYLE

EXAMPLE IMAGES



MAIN DISTINGUISHING CHARACTERISTICS

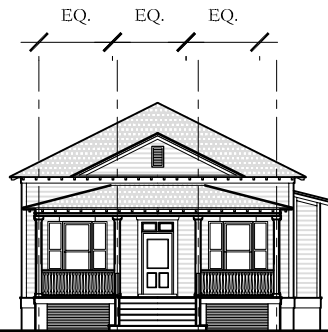
- Accentuated front door with decorative pediment supported by pilasters, or extended forward and supported by slender columns to form the entry
- Windows are commonly double-hung sashes with multi-pane glazing
- The Colonial (Farmhouse) style commonly has a front porch that may be many different variations such as full width, full height, asymmetrical, or wrap around.

TRADITION

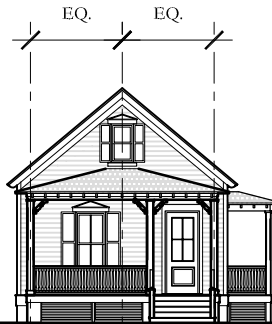
COLONIAL (FARMHOUSE) TYPOLOGIES

ELEVATIONS

BASIC MASSING



COLONIAL FARM HOUSE COTTAGE



COLONIAL FARM HOUSE COTTAGE



COLONIAL FARM HOUSE COTTAGE



COLONIAL FARMHOUSE



COLONIAL FARMHOUSE



COLONIAL FARMHOUSE



COLONIAL FARMHOUSE



COLONIAL FARMHOUSE



COLONIAL FARMHOUSE

Basic Massing:

- Asymmetrical:
 - Asymmetrical facade
- Hipped roof with full-width porch:
 - One-story, full-width porch with classical or boxed columns added to a symmetrical two story rectangular plan
 - May have two-story pilasters at the corners
 - Hipped or Gabled dormers
- Side-gabled roof:
 - Simple one or two story rectangular box with a side-gabled roof
- Centered gable:
 - Centered gabled roof in a single or double story configuration with full width porch either hipped or incised with classical or boxed columns.
- One-story:
 - The one story may have a hipped or gabled roof.

THESE DIAGRAMS ILLUSTRATE A RANGE OF POSSIBILITIES FOR HOUSE DESIGNS USING THE TRADITION DESIGN CODE.