

TRADITION

COASTAL FRENCH STYLE

EXAMPLE IMAGES



MAIN DISTINGUISHING CHARACTERISTICS

- Coastal French details are very simple, non-ornamental.
- Incised porches are common.
- The roof is usually steeply pitched roof, either hipped or side gabled.
- Narrow door and window openings with paired shutters are common.
- Front door is usually a pair of French doors with 3 lights.

Coastal French has evolved over several hundred years. The influences can be attributed to colonial France, Acadian migration, and Creole influences. Each represents a different influence affected by their homeland climate. Steep pitches, large porches, and double doors which allow cross ventilation are characteristics which symbolize this elegant architecture.

French Colonial:

- Exposed rafter ends

Acadian:

- Absent center hall door
- Four openings on front elevation

Creole:

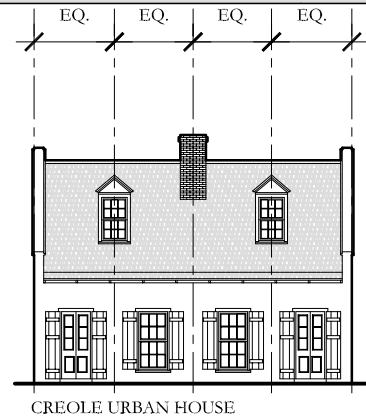
- Exposed rafter ends
- Absent center hall door
- Four openings on front elevation

TRADITION

COASTAL FRENCH TYPOLOGIES

ELEVATIONS

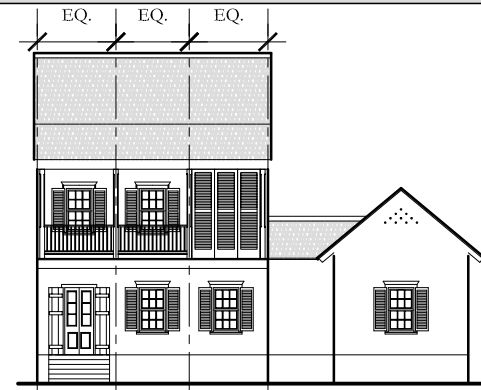
BASIC MASSING



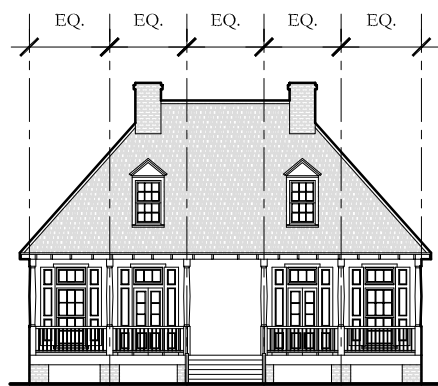
CREOLE URBAN HOUSE



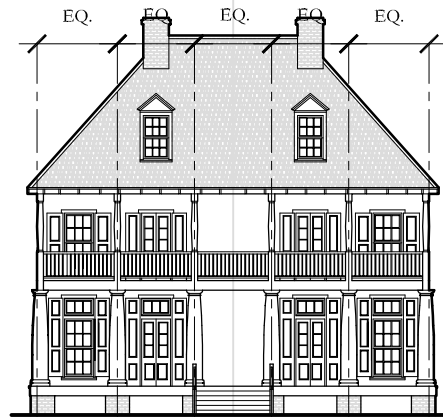
FRENCH TOWNHOUSE



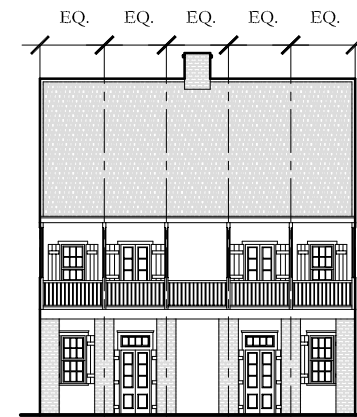
FRENCH URBAN HOUSE



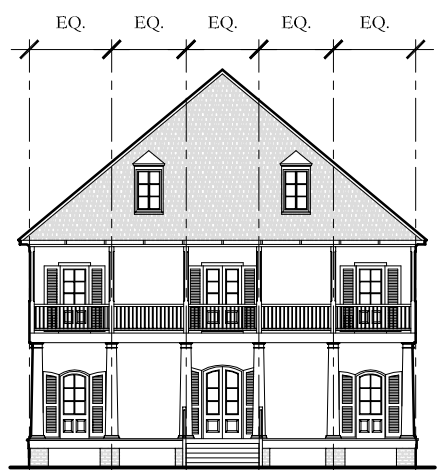
CREOLE COTTAGE



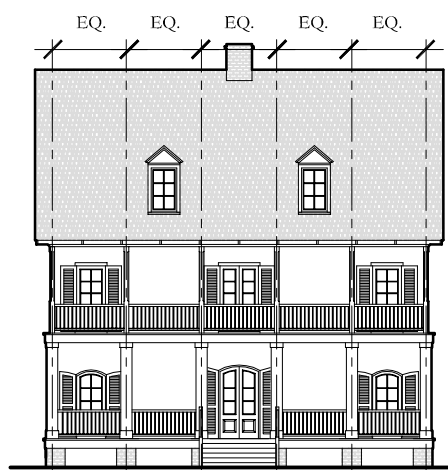
CREOLE RAISED COTTAGE



ACADIAN RAISED COTTAGE



FRENCH COLONIAL HOUSE



ACADIAN RAISED HOUSE



FRENCH COLONIAL HOUSE

- Urban Tradition
 - No porch and built right up to the adjacent sidewalk (townhouse)
 - The roof has flared eaves that overhang the front facade
- Rural Tradition
 - Extensive porches supported by slender wooden columns under the main roof line; usually hipped roof and commonly raised on high masonry foundations, the porch area supported by massive masonry columns

THESE DIAGRAMS ILLUSTRATE A RANGE OF POSSIBILITIES FOR HOUSE DESIGNS USING THE TRADITION DESIGN CODE.