

T R A D I T I O N

C L A S S I C A L S T Y L E

EXAMPLE IMAGES



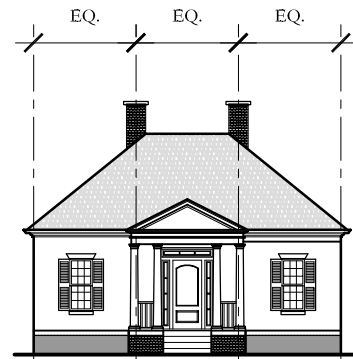
MAIN DISTINGUISHING CHARACTERISTICS

- The doorway, cornice line, and type of column are main distinguishing characteristics that define the Classical style. (See example details sheets.)
- Full-height entry porch (portico) on the front facade is a common Classical feature.
- Centered gable porch roof supported by four simple columns each with a shallow square base (plinth) is also common.
- A semicircular or elliptical fanlight above the paneled front door distinguishes a Classical style house.
- Windows are commonly aligned in symmetrical rows horizontally (usually five in a row, but may be three or seven) and vertically on the front facade

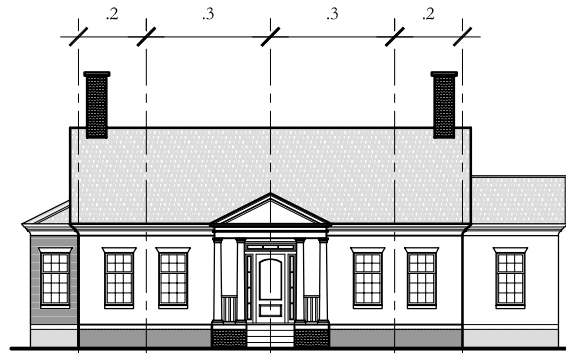
TRADITION

CLASSICAL TYPOLOGIES

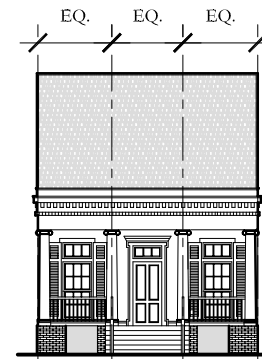
ELEVATIONS



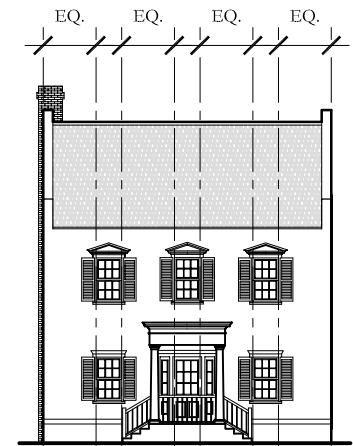
CLASSICAL COTTAGE



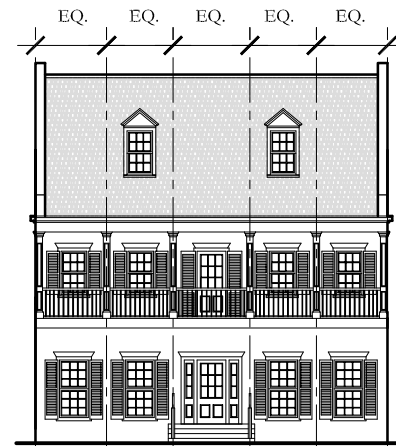
CLASSICAL COTTAGE



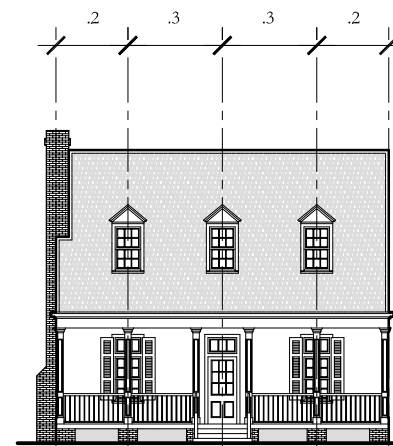
CLASSICAL COTTAGE



AMERICAN TOWNHOUSE



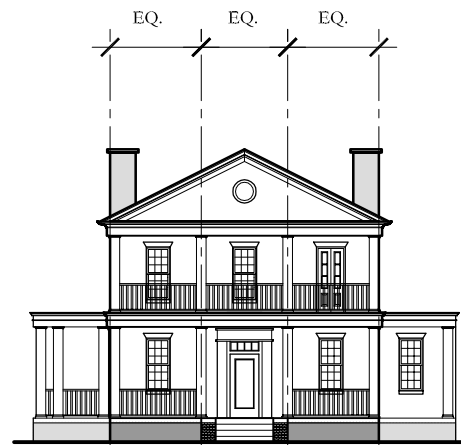
AMERICAN RAISED COTTAGE



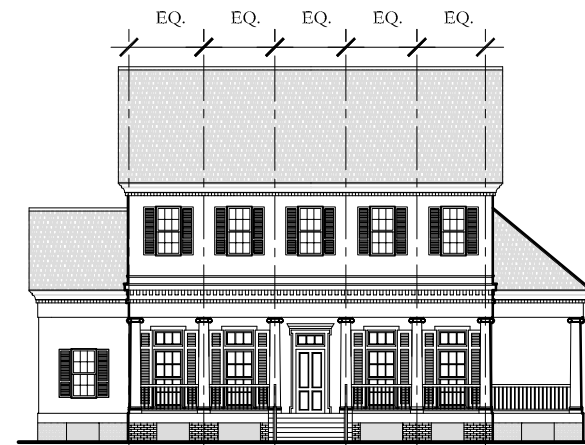
AMERICAN COTTAGE



CLASSICAL HOUSE



FEDERAL HOUSE



NEOCLASSICAL HOUSE

BASIC MASSING

- One-story:
Simple, rectilinear house with side-gabled or low-pitched hipped roof with a full-height entry porch
Built off the ground
- Two-story:
Same characteristics as the one-story, but has a two-story facade and entry porch
- Gabled front and wings:
Two-story, front gabled central block flanked by one-story wings on either side; called the Palladian three-part plan
The dominant central block may have either a full-height, two-story entry porch or a smaller one-story entry porch

THESE DIAGRAMS ILLUSTRATE A RANGE OF POSSIBILITIES FOR HOUSE DESIGNS USING THE TRADITION DESIGN CODE.