

TRADITION

COLONIAL (CLASSIC) STYLE

EXAMPLE IMAGES



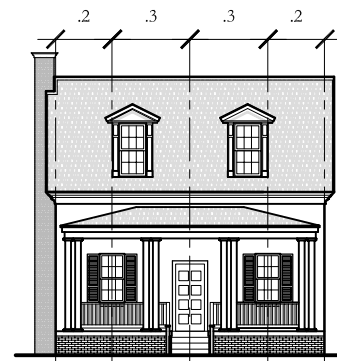
MAIN DISTINGUISHING CHARACTERISTICS

- Accentuated front door with decorative pediment supported by pilasters, or extended forward and supported by slender columns to form the entry is common.
- The facade commonly has symmetrically balanced windows and center door (may have off center door).
- Windows are commonly double-hung sashes with multi-pane glazing.
- Windows may be in adjacent pairs.
- The cornice line is a distinguishing characteristic of the Colonial (Classic) style. (See example details sheets).

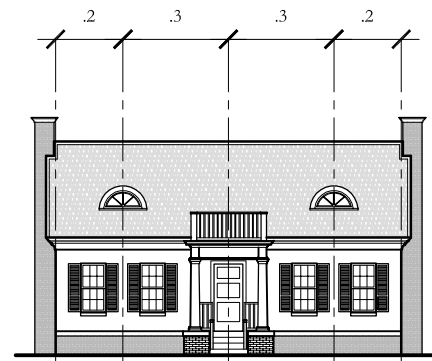
TRADITION

COLONIAL (CLASSIC) TYPOLOGIES

ELEVATIONS



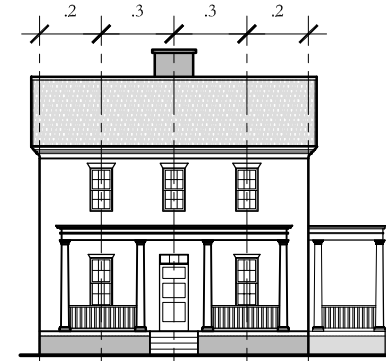
COLONIAL COTTAGE



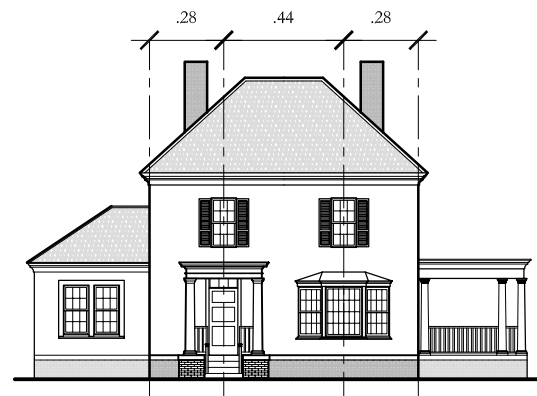
COLONIAL COTTAGE



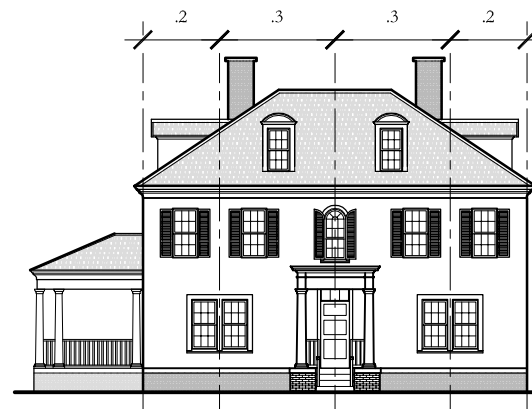
COLONIAL COTTAGE



COLONIAL COTTAGE



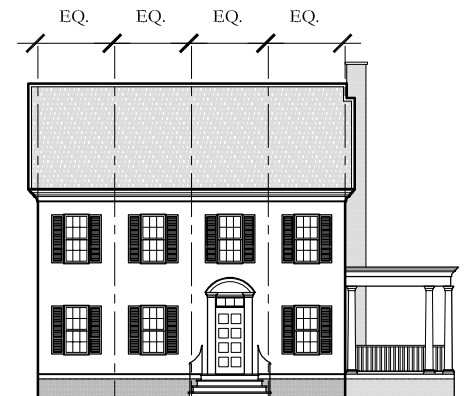
COLONIAL HOUSE



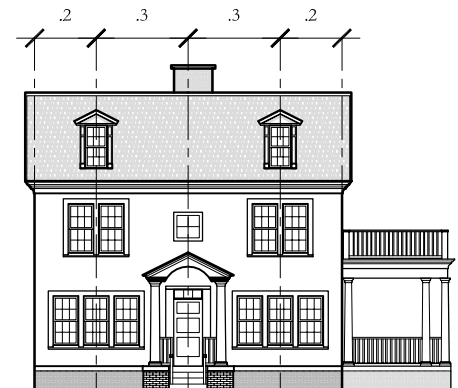
COLONIAL HOUSE



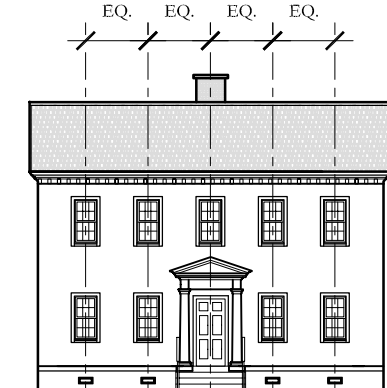
COLONIAL HOUSE



COLONIAL HOUSE



COLONIAL HOUSE



ADAMS HOUSE



COLONIAL SIDEYARD HOUSE

BASIC MASSING

Basic Massing:

- Hipped roof without full-width porch:
Simple two story rectangular box with a hipped roof
Small entry porch if any
- Side-gabled roof:
Simple two story rectangular box with a side-gabled roof
- Second story Overhang:
The second story is extended slightly outward to overhang the wall below
Typically have masonry veneered first story with wooden wall cladding above
- One-story:
The one story may have a hipped or gabled roof.

THESE DIAGRAMS ILLUSTRATE A RANGE OF POSSIBILITIES FOR HOUSE DESIGNS USING THE TRADITION DESIGN CODE.